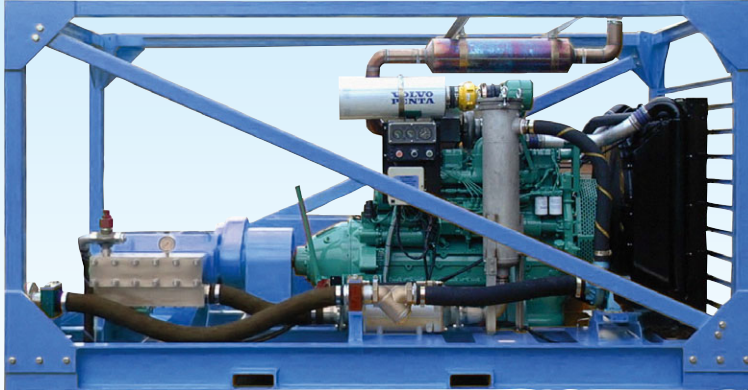


HPS5000 DC HP Water Jetting Unit



Water Jetting Solutions



HPS5000 Diesel Crashframe

Typical performances *

124 lpm at 1400 bar	(27.3 igpm / 32.9 usgpm at 20,300 psi)
169 lpm at 1150 bar	(37.1 igpm / 44.7 usgpm at 16,675 psi)
200 lpm at 1000 bar	(43.8 igpm / 52.7 usgpm at 14,500 psi)
220 lpm at 900 bar	(48.5 igpm / 58.4 usgpm at 13,050 psi)
279 lpm at 700 bar	(61.4 igpm / 73.9 usgpm at 10,150 psi)
344 lpm at 570 bar	(75.8 igpm / 91.3 usgpm at 8,265 psi)

* Refer to HPS5000 pump data sheet for full range of performances

HPS5000, 375 kW (500 hp) diesel engine driven, crashframe mounted, High Pressure water jetting unit, suitable for the most demanding applications. The most powerful unit in the Hughes range.

Simple to operate & maintain, this is probably the most user friendly HP unit on the market. Suitable for automated applications and multi gun / footvalve

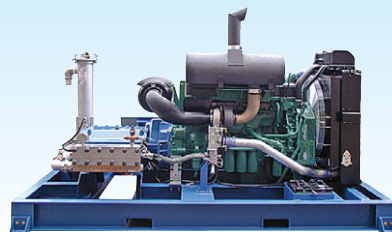


Descaling large diameter pipework – 200 lpm / 1000 bar

operation. Applications include hydro-demolition, surface cleaning / de-scaling, coatings removal, heat exchanger / pipe cleaning, tank / vessel cleaning & floor, road & runway cleaning.

Dimensions :
3.8m long x 1.8m wide x 2.0m high
(149" long x 71" wide x 79" high)

Weight :
4400 kg (9,680 lb)



HPS5000 DS (Diesel Skid)

Features

- HPS5000 quintuplex pump with pressure lubrication, filtration and oil cooling. Stainless steel pumphead, solid ceramic plungers, integral gearbox and SAE adaptor housing.
- Glycerine filled pressure gauge & safety relief valve
- Volvo TAD1242VE (357 kW / 486 hp) or TAD1641VE (406 kW / 552 hp) engine. Comply with EPA / CARB Tier 2 & EU stage II exhaust emission regulations. Simple auto shutdown control panel
- Boost pump, high capacity stainless steel filter housing with 50 micron element, stainless steel fittings & boost pressure switch.
- Stainless steel water tank (optional)
- Crashframe with two forklift pockets & four lifting points. High quality powder coated paint finish

Build Options

- Unloader / pressure adjusting valves
- Selector / diverter valves
- Spark arresting silencer & Chalwyn valve
- Rigsafe or Zone 2 engine build
- Certified crashframes
- Alternative engines
- Zinc rich powder coated paint finish for corrosive environments
- High volume builds to 775 lpm at 250 bar (170.5 igpm / 205.4 usgpm at 3,625 psi)
- Enclosed versions
- Site trailer undergear

Ultra High Waterblasters (Aust) Pty Ltd
9 Deebing Street West Ipswich Qld Australia
Ph +61 07 3812 1112 Fax +61 07 38121115
www.auswaterblasters.com.au Email info@auswaterblasters.com.au



In line with the Company's policy of research and development, alterations in design, dimensions and appearance are incorporated from time to time in order to ensure that important developments are included at the earliest opportunity. The Company, therefore, reserves the right to alter design, dimensions etc without notice.